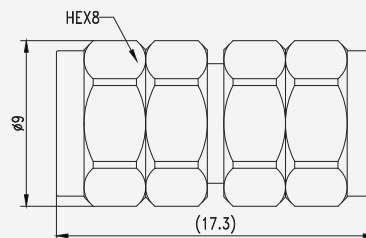


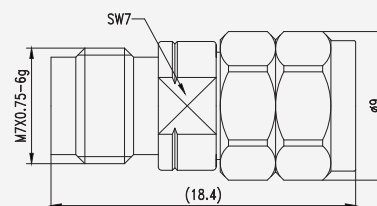
▶ 24/24 series

Frequency(GHz)	50G	Material/Surface treatment	
Standing wave	1.20	Outer conductor	Stainless steel/deactivation
Durability	3000times	Inner conductor	Beryllium bronze/gold-plated
		Insulator	PEI

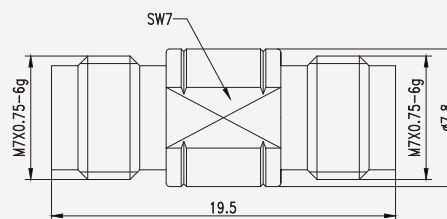
24/24-JJG



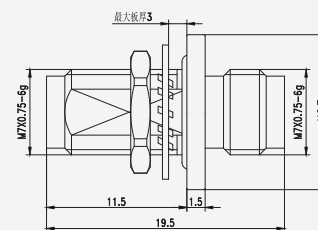
24/24-JKG



24/24-KKG



24/24-KYKG



24/24-KFKG

